



Oldedalen, Norway. Photo by Laura Baker

Inspera Assessment was updated 4th May 2018

Welcome to our Release Webinar of Tuesday 8th May, 13.00 - 13.45 CET.

[Sign up](#)

Already signed up? Visit [this page](#) for webinar details.

The Inspera Team

Heads up

GDPR Declaration to end users updated

At Inspera, we take our users' privacy seriously. Follow [this link](#) to read more about our data policies and our GDPR compliance strategy.

InsperaSummer

Improving Inspera Assessment together with students

The [Inspera Summer Internship Programme](#) is an exciting opportunity for your students to help us improve the Inspera platform. For three months, our summer interns will be full members of the Inspera team, shaping the future of assessment within the areas of security, UX design, testing and Research & Development.

Questions? Drop us a line at internships@inspera.no.

Feel free to share the [application page](#) with your students.

Inspera Seminar2018

Registration now open

20th - 21st September 2018

Oslo Science Park

NOK 900,- per day.

The annual Inspera Seminar is the largest e-Assessment conference in Scandinavia. Visit inspera.com/seminar2018/overview to register, submit ideas, or revisit seminar pages from earlier years.

During May, we will share more information on keynote speakers and topics.

[Learn more](#)

Postponed feature

Override Candidate Progress moved to maintenance update 11th May.

We are extending the test period for this feature. More details below.

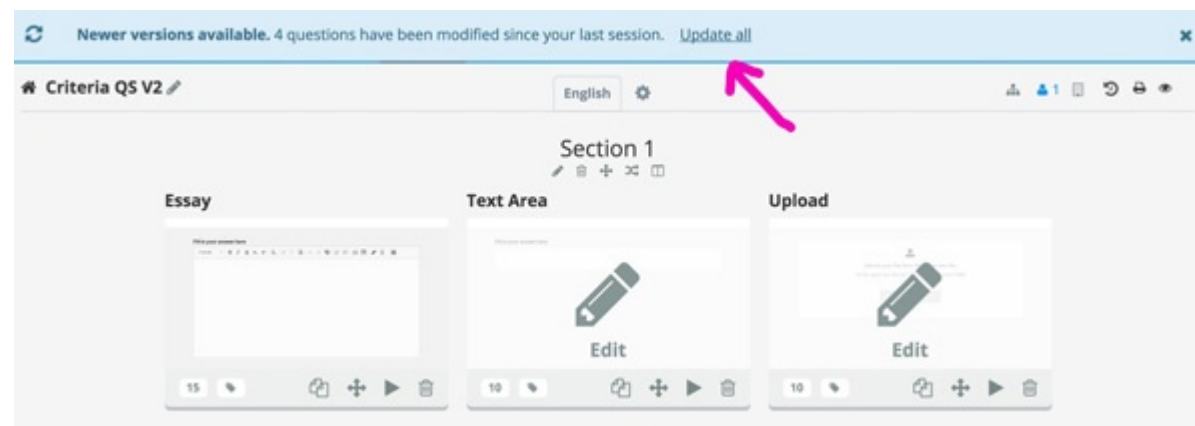
4th May Release Overview

Author

New action to update all questions at once

No activation required.

Authors collaborating in a Question Set are now able to update all questions to the latest version with a single click.



A new, blue alert will be shown when opening a Question Set containing new versions

Deliver

Set custom Day Passwords

No activation required.

Planners now have the option to define a custom Day Password manually, in addition to generating a password automatically upon test activation. This allows institutions to set a shared day password across multiple tests in the same location.

Require Day Password [Learn more](#)

Generate Day Password upon test activation

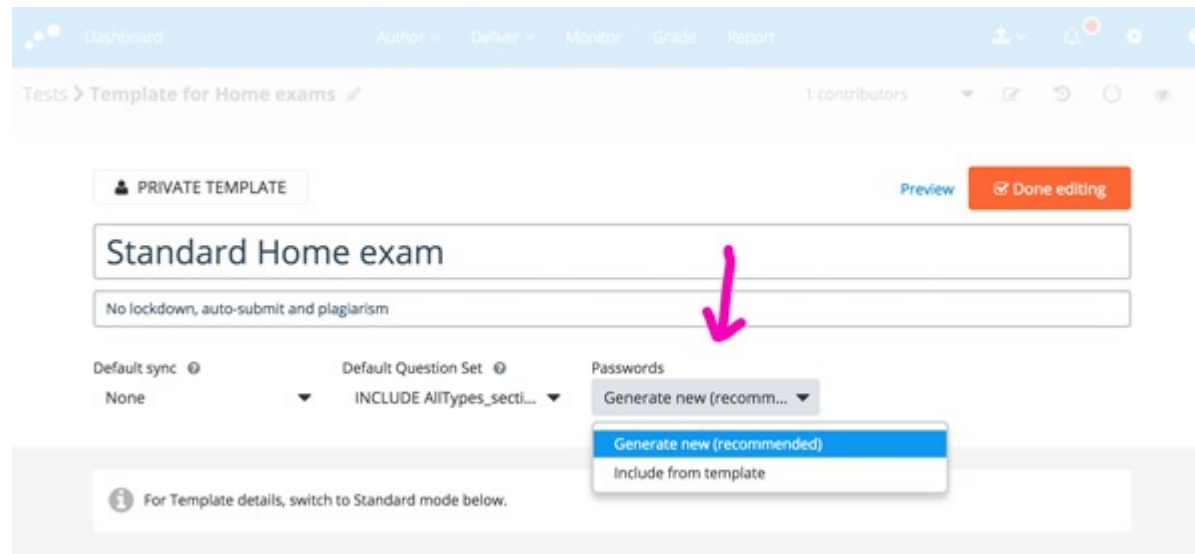
Set manually :

Must be between 4 and 10 characters

Configure behaviour of passwords in Templates

For security purposes, Template owners are now able to configure how passwords in Templates are defined in new tests created from Template:

- **Generate new.** Use this option if you want new, unique passwords to be generated automatically when creating new test from the Template
- **Include from Template.** Use this option if you want new tests to reuse passwords defined in the Template

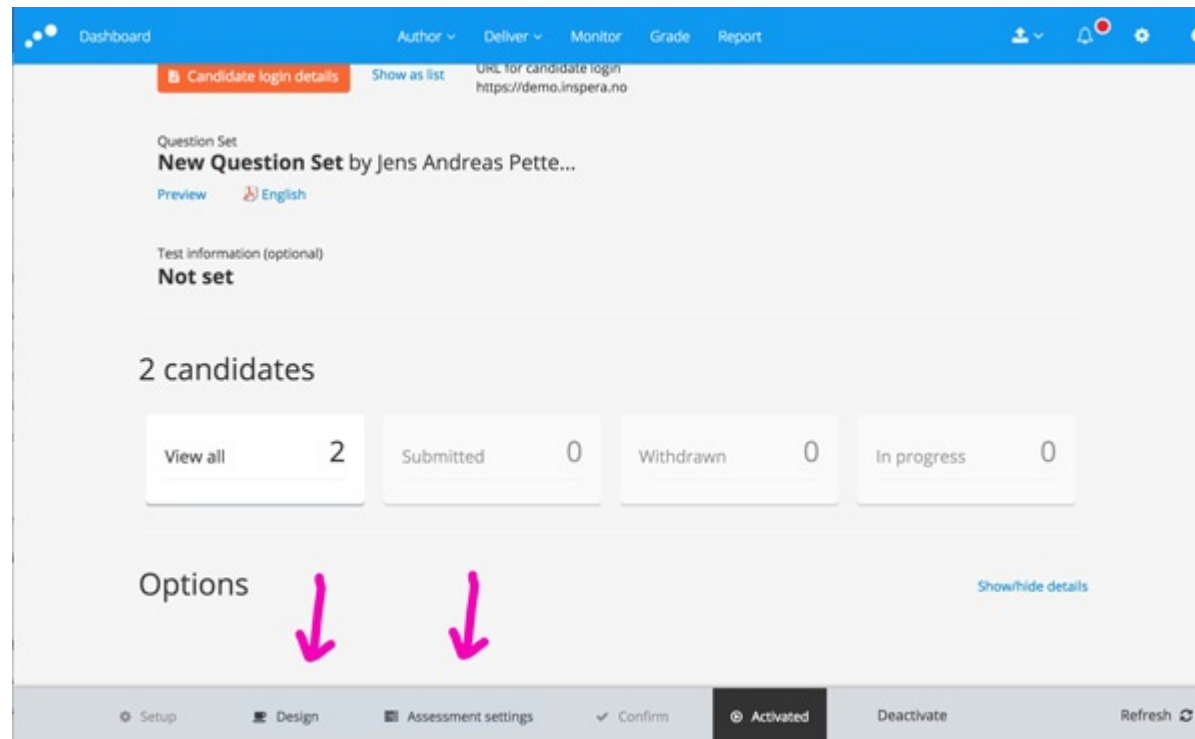


The Password option is edited in the same way as Sync and Question Set configuration.

Edit Design and Assessment settings after activation

Will be rolled out during week 19. No activation required.

Planners only. Planners are now able to view and edit Design and Assessment Settings after activating a test.



The Design and Assessment settings steps will now be clickable post-activation

The following security mechanisms apply:

If no candidates have started the test, planners are allowed to:

- View and edit Design settings
- Edit threshold values

If one or more candidates have started the test, planners are allowed to:

- View Design settings (read only)
- Edit threshold values.

If **grading** has started, threshold values can only be edited from the Grading tool.

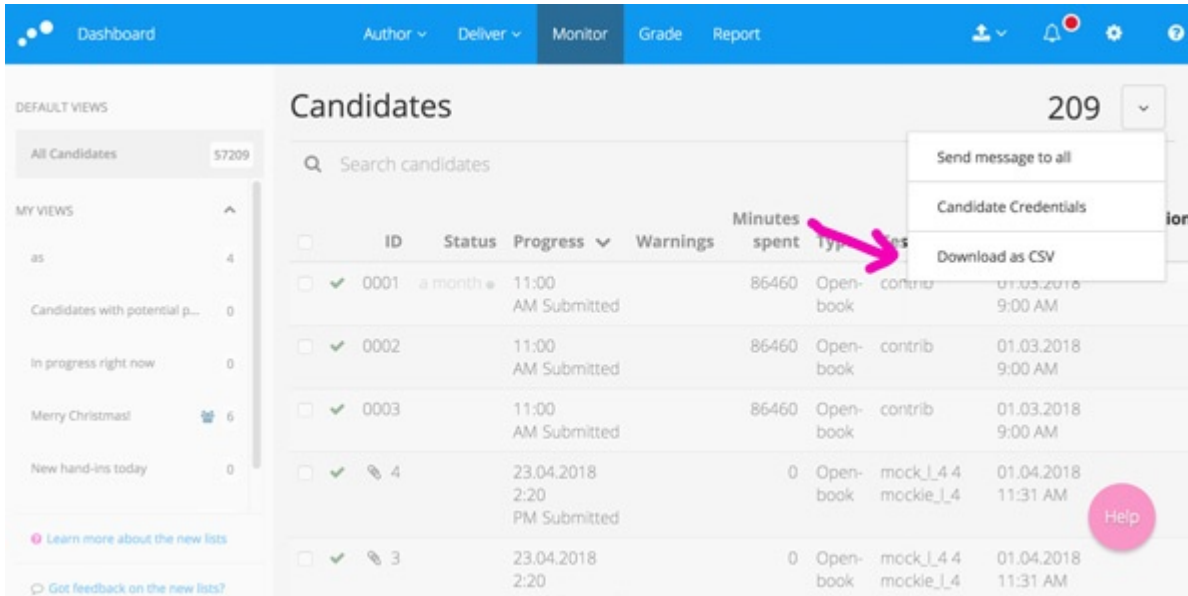
Monitor

Export Monitor data as CSV

No activation required.

It is now possible to export data from any given Monitor View to CSV, with a maximum of 5000 candidates at once:

1. Search or filter down your candidates
2. Show/hide and sort columns of interest
3. Select *Download as CSV*



The screenshot shows the 'Monitor' tab in a software interface. The main area displays a table of candidates with columns for ID, Status, Progress, Warnings, Minutes spent, Type, and Dates. A dropdown menu is open next to the '209' hit count, showing options: 'Send message to all', 'Candidate Credentials', and 'Download as CSV'. A pink arrow points to the 'Download as CSV' option. The table contains several rows of candidate data, including IDs 0001, 0002, 0003, and 4, with various submission times and statuses.

ID	Status	Progress	Warnings	Minutes spent	Type	Dates
0001	AM Submitted	a month	11:00	86460	Open-book	01.03.2018 9:00 AM
0002	AM Submitted		11:00	86460	Open-book	01.03.2018 9:00 AM
0003	AM Submitted		11:00	86460	Open-book	01.03.2018 9:00 AM
4	PM Submitted		23.04.2018 2:20	0	Open-book	01.04.2018 11:31 AM
3	PM Submitted		23.04.2018 2:20	0	Open-book	01.04.2018 11:31 AM

The option to export Monitor data to CSV is found in the dropdown next to the hit count

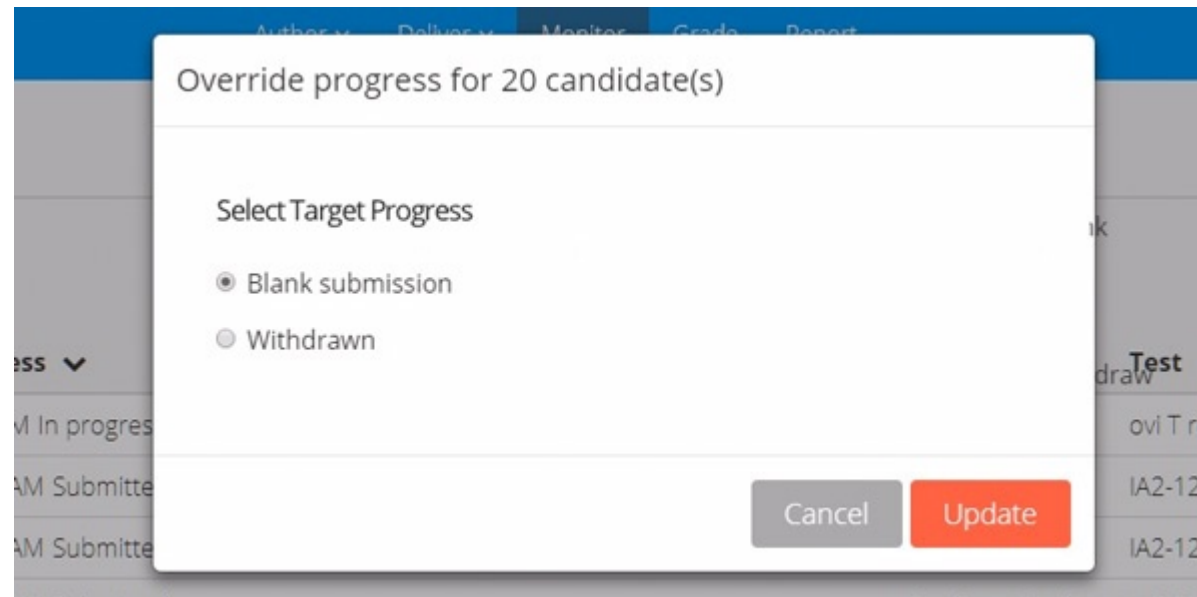
Please note. Due to how the value "Minutes spent" is calculated, to make sure the results are as precise as possible, we recommend not exporting this column during live tests. Wait until the test is closed and all candidates have submitted.

Override Candidate Progress (Available from 11th May)

Will be rolled out during week 20. Activation through [Service Desk](#) required.

Planners with Extended Access only. The concept of *Candidate Progress* refers to the status of each candidate throughout the exam day: Inactive > Dashboard > Ready > In progress > Submitted.

Planners with extended access will be able to override this status for single candidates and multiple candidates at once (batch).



Depending on current progress of selected candidates, Planners with Extended access can override the progress to other values.

Other improvements and bug fixes

- Performance improvements in Monitor

- Sketch Code Sheet: ID and the room info in page header and improved sorting
- Inspera API: SEB-password included in API
- Templates: Fixed issue with Ladok as default sync not updating
- Adding Contributors: Fixed issue with deactivated users showing in search results
- Author: Fixed issue with copying question set not duplicating questions
- Author: Fixed issue with removing labels from questions
- Grading Protocol: Fixed issue with missing assessment combination field
- Removed "Paste from word" in Essay toolbar due to limited browser support
- Removed "Cut" in Essay toolbar due to limited support in Mac SEB 2.1.2

Inspira AS Brynsveien 18 Oslo, Oslo 0667 Norge

You received this email because you are subscribed to Inspera Assessment Release Notes from Inspera AS.

Update your [email preferences](#) to choose the types of emails you receive.

[Unsubscribe from all future emails](#)